

# "What Comes Next: Finding Your Stride" (Developmental Delay & the IEP)

9:15 – 10:15 am

[Click here to Zoom](#)

Passcode: SPIN2021

## Workshop Description

Find your stride as you learn about the criteria for Developmental Delay in both Part C (Early Intervention) and Part B (Department of Education) under IDEA. Pick up the pace to understand the process of re-categorizing eligibility for special education and related services when a student in Hawaii turns 9 years old.



### Earn Your Badge:

**Learn:** What Developmental Delay is in IDEA.

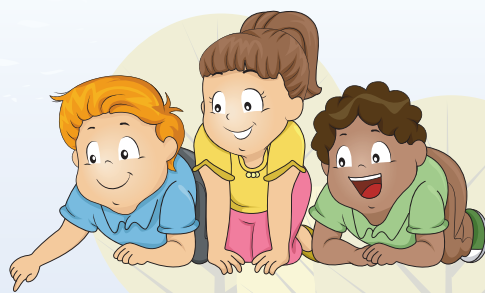
**Understand:** The differences in eligibility criteria for different age groups.

**Demonstrate:** How to get the right assessments and work with your IEP team.

**Find:** Resources to support your child.

Developmental Delay is for children from birth to age three (under IDEA Part C) and children from ages three through nine (under IDEA Part B). The term "developmental delay" as defined by each state, means a delay in one or more of the following areas: physical, cognitive, communication, social or emotional or adaptive development.

~ Center for Parent Information & Resources



## Meet your Expert Guides



Jeff



Verna

**Dr. Jeff Okamoto** is a Developmental-Behavioral Pediatrician at Kapiolani Medical Center for Women and Children, and faculty in the Department of Pediatrics at the John A. Burns School of Medicine at the UH. He is involved with the American Academy of Pediatrics (AAP) where he is the vice-president for the Hawaii chapter.

**Verna Chinen** works in the HODOE Office of Student Support Services and is a preschool specialist. Verna will share her knowledge of how the DOE supports students with the Developmental Delay IDEA category and what comes next after they turn 9 years old.