



35th Annual SPIN Conference

Saturday October 23, 2021
9:00 am - 1:30 pm

Program Guidebook

SPIN Wilderness Explorer Motto:
SPIN is a friend to Explorers all
parents, teachers & keiki big & small.








Pre-Conference:

Watch pre-recorded workshops

Don't forget to visit our Workshops tab to watch our 2 pre-recorded workshops on Extended School Year information and Benefits Planning for students with disabilities. Then pop into the Networking rooms after the workshops to talk story with the presenters!

How to Zoom the 2021 SPIN Conference

Your step by step guide to have a successful day of learning, connecting and virtual gathering.
Conference Day is Saturday October 23, 2021. Visit our website spinconference.org to get started.

 Register	 Virtual Backpack	 Live Workshops	 Networking	 More Resources
Register to Attend <ul style="list-style-type: none">• Please register for the conference by visiting www.spinconference.org and click on the "Registration" tab.• Fill out the Google form and submit.• A confirmation email will be sent to you in a day or two with important conference information.• You're all set! This year, there is no cost for the SPIN Conference!• On Conference Day, go to spinconference.org, and click on the "Ballroom" to attend the conference.	Download Resources <ul style="list-style-type: none">• Visit the conference webpage, click on the "Virtual Backpack" tab.• Click on the links to download virtual backgrounds & badges for each workshop.• This is where you will find a digital copy of the wildly popular "Parent's Guide to Special Education".• On Conference Day, workshop handouts and materials will be found on this page for you to download.	Attend Live Workshops <ul style="list-style-type: none">• On conference day, after the welcome in the ballroom, click on the "Workshops" tab.• There will be 3 live sessions. Each session will have 3 workshops.• You will choose a workshop to attend by clicking on the link next to the description.• All workshops will be recorded and posted on the spinconference.org website a few weeks after Conference Day, so you can catch the ones you missed.	Time for Talk Story <ul style="list-style-type: none">• After the workshops are finished, it's time for networking & talk story.• Click on the "Networking Lunch" tab.• Watch the two pre-recorded workshops, then visit the speakers here.• Click on one of the networking rooms to pop in and out of.• All rooms will be monitored and moderated.• Please remember to Be Kind, Be Considerate and Be Respectful to one another.	Explore the Conference <ul style="list-style-type: none">• Watch our 2 pre-recorded workshops any time before the conference, then visit the presenters in the networking rooms to ask a question.• Click on the "Community Resources" tab to find helpful organizations in our community.• Watch workshops from the 2020 conference plus our spring 2021 workshops on transition.• Don't forget to visit SpinHawaii.org for more resources and our events page.



If you need help on Conference Day, call (808) 586-8126 for tech support.
If you need help before Conference Day, email spin@doh.hawaii.gov



SPIN's Golden Rules for a great ZOOM workshop

- All workshops are webinars, so your video and sound will be off
 - Use the Q&A box to ask a question
- All Networking rooms are meetings, so your video and sound can be on if you choose.
 - Use the CHAT box to ask a question
- Be kind, be considerate, be respectful
- Workshops will be recorded and posted to the SPIN Conference website soon!



Conference Day Schedule

8:50 Log into SPIN's Zoom Ballroom

9:00 Welcome & Opening Number

9:15 Breakout Session 1

A: Autism Motivations

B: Developmental Delay & IDEA

C: ADHD & Executive Functioning



10:20 Breakout Session 2

D: Teacher/Family Partnerships

E: Inclusive Education Practices

F: Employment: Out of the Box

11:25 Breakout Session 3

G: Early Intervention

H: Social Emotional Learning

I: IEP Preparation

12:30 Networking Rooms open

J: Autism Families

K: Benefits Planning/Social Security

M: ESY and updates to the program

1:30 All Pau



Earn SPIN Explorers Badges

Following our theme of SPIN Wilderness Explorers, we invite you to "earn" different badges before, during and after the conference.



How to Earn your Badge:

- Watch a pre-recorded workshop
- Attend a live workshop

How to Display Your Badges

1. Download and print the Badge page from the Program Book.
2. Cut out the badges.
3. Tape the SPIN Badge to your shirt when you enter the Ballroom or for your 1st workshop.
4. After attending a workshop, tape the workshop badge to your shirt for all to see!
5. You can also add them to the sash on this page.



SPIN Conference Badges



Mahalo to our SPIN Advisors!

The SPIN Advisory Council is made up of volunteer representatives from child-serving organization in Hawaii. They have met virtually twice a month for over a year, to plan the SPIN Conference and other events throughout the year. We are blessed and grateful for their dedication to families and to improving special education services in Hawaii.

Abigail George - [Developmental Disabilities Division \(DDD\)](#)

Amy Ruhaak - [Office of Student Support Services \(DOE\)](#)

Anthony Akamine - [Office of Elections](#)

Daintry Bartoldus - [DD Council](#)

Hannah Diaz - [Assistive Technology Resource Centers](#)

Helena Pontillas - [Shriners Hospital for Children Honolulu](#)

Jackie Jackson - [Hawaii Families as Allies](#)

Dr. Jeffrey Okamoto - [Kapiolani Hospital for Women & Children](#)

Kiriko Takahashi - [UH Center on Disability Studies](#)

Merlene Jose - [Shriners Hospital for Children Honolulu](#)

Michelle Manfredi - [Parent](#)

Renee Manfredi - [Self-Advocate](#)

Sarah Man - [Hawaii Autism Foundation](#)

Steven Vannatta - [Community Children's Council Office \(DOE\)](#)

Susan Wood - [Leadership Education in Neurodevelopmental & Related Disabilities \(LEND\)](#)

Tina King - [Leadership in Disabilities & Achievement of Hawaii](#)

Sheri Umakoshi - [Early Intervention Section \(DOH\)](#)

Mahalo to our Generous Donors!

SPIN is so grateful to the Hawaii organizations, businesses and individuals who have generously donated a gift card or prize for the SPIN Conference!

Winners will be announced at the end of each live workshop. If you are a winner, come visit us in the Ballroom to see what you've won!



BISHOP MUSEUM

1 - Family Membership



1 - Family Membership



Hawaii Kai

1 - \$50 Gift Card



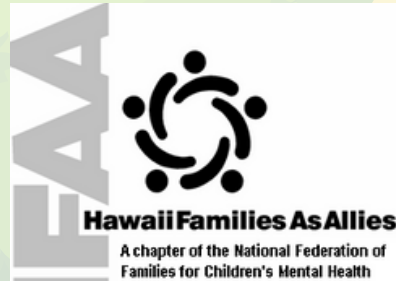
1 - \$25 Amazon Gift Card



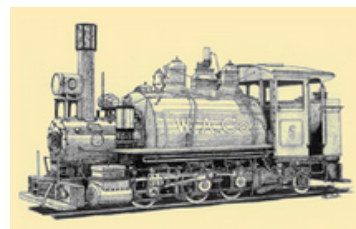
3 - \$25 Gift Cards



4 - \$25 Gift Cards



2 - \$50 Visa Gift Cards



Hawaiian Railway Society

4 - Tickets to Ride



2 - General Admission Tix



Waipio

1 - \$25 Gift Card



1 - 8" Kindle Fire HD



SPIN Conference Supporters

2 - \$25 Target Gift Cards



SPIN Conference Supporters

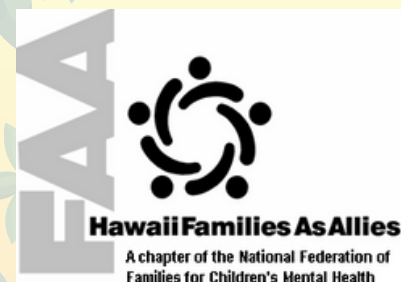
3 - \$25 Amazon Gift Cards



6 - \$20 Starbucks Gift Cards



30 - One-day passes



1 - \$50 Walgreens Card

Start your SPIN Conference at

www.SPINConference.org

Enter the Ballroom at 9:00 am

[Click here to Zoom](#) passcode: SPIN2021

- Opening Number by the SPIN Advisors
- Welcome by Annie Kalama, Director of the HIDOE Exceptional Support Branch
- Housekeeping and Reminders

Come back to the Ballroom if you are:

- lost or don't know what to do next
- want to say hi to Susan & Amanda
- claiming a door prize won in a workshop

NEED HELP?

Visit our Help Desk, located in the Ballroom for help getting connected to all workshops and networking rooms.

[Click here to Zoom](#) Passcode: SPIN2021

"Not All Who Wander Are Lost" (Autism Motivation)



9:15 – 10:15 am

[Click here to Zoom](#)
Passcode: SPIN2021

Workshop Description

Every unique child will have something that drives them to engage and learn, it's up to us to find out what it is and how to use it. This presentation will walk you down the path to understanding what motivates your child and how to use that motivation to help your child learn and grow.

Earn Your Badge:

- Learn:** How motivation engages learning.
- Understand:** What motivates your child.
- Demonstrate:** How to think about motivation.
- Find:** Additional resources about motivation.

“If a child
can't learn
the way we teach,
maybe we
should
teach the
way they learn.”

~ Ignacio Estrada

Meet your Expert Guides



Ann

Michelle & Renee

Ann Garfinkle is an Associate Professor in the Department of Curriculum & Instruction at the University of Montana. She is currently working on a book about motivation for individuals with autism.

Michelle & Renee Manfredi are a mom/daughter duo who have discovered Renee's talents through exploring what motivates her and building on her experiences.

"What Comes Next: Finding Your Stride" (Developmental Delay & the IEP)

9:15 – 10:15 am

[Click here to Zoom](#)

Passcode: SPIN2021

Workshop Description

Find your stride as you learn about the criteria for Developmental Delay in both Part C (Early Intervention) and Part B (Department of Education) under IDEA. Pick up the pace to understand the process of re-categorizing eligibility for special education and related services when a student in Hawaii turns 9 years old.



Earn Your Badge:

Learn: What Developmental Delay is in IDEA.

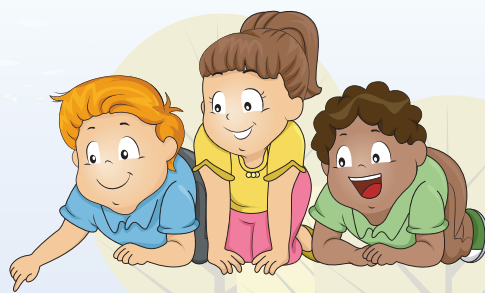
Understand: The differences in eligibility criteria for different age groups.

Demonstrate: How to get the right assessments and work with your IEP team.

Find: Resources to support your child.

Developmental Delay is for children from birth to age three (under IDEA Part C) and children from ages three through nine (under IDEA Part B). The term "developmental delay" as defined by each state, means a delay in one or more of the following areas: physical, cognitive, communication, social or emotional or adaptive development.

~ Center for Parent Information & Resources



Meet your Expert Guides



Jeff



Verna

Dr. Jeff Okamoto is a Developmental-Behavioral Pediatrician at Kapiolani Medical Center for Women and Children, and faculty in the Department of Pediatrics at the John A. Burns School of Medicine at the UH. He is involved with the American Academy of Pediatrics (AAP) where he is the vice-president for the Hawaii chapter.

Verna Chinen works in the HODOE Office of Student Support Services and is a preschool and early literacy specialist. Verna will share her knowledge of how the DOE supports students with the Developmental Delay IDEA category and what comes next after they turn 9 years old.

"ADHD Wilderness Survival Guide" (ADHD & Executive Functions)

9:15 – 10:15 am

[Click here to Zoom](#)

Passcode: SPIN2021

Workshop Description

Hike over to this workshop and meet your expert guide on ADHD. Uncover the secrets to how executive functioning affects all aspects of our lives and get survival tips on how executive functioning is impacted by ADHD.



Earn Your Badge:

Learn: The criteria for diagnosing ADHD.

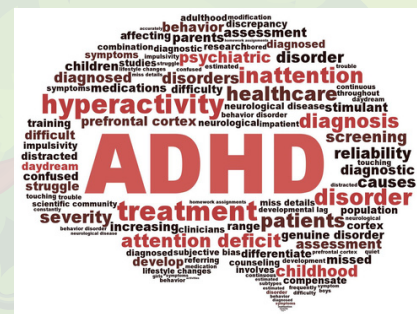
Understand: How ADHD affects executive functioning in children and youth.

Demonstrate: How to use behavioral interventions and teaching strategies to support your child with ADHD at home.

Find: Resources to support your child.

Executive function is a set of mental skills that include working memory, flexible thinking and self-control. We use these skills every day to learn, work and manage daily life. Trouble with executive function can make it hard to focus, follow directions and handle emotions, among other things.

~ Understood.com



Meet your Expert Guide



Rockey Knox started her career as a special education teacher in the HIDOE and is now an assistant professor in the Department of Special Education at UH Manoa. Her fields of interest include ADHD, educational neuroscience, and the relationships between emotions, cognition, and learning. Rockey often blends her personal experiences growing up with ADHD with her insights as a teacher and researcher to address the issue from a variety of perspectives.

"Finding Trees in the Forest" (Teacher/Family Partnerships)

10:20 – 11:20 am

[Click here to Zoom](#)

Passcode: SPIN2021



Workshop Description

For students with disabilities, the relationship between parents and teachers is key to future success. Learn tips from these expert guides--a savvy parent consultant and an outstanding special education teacher--on how to travel the path of partnership.

Nevertheless, no school can work well for children if parents and teachers do not act in partnership on behalf of the children's best interests. Parents have every right to understand what is happening to their children at school, and teachers have the responsibility to share that information... Such communication, which can only be in a child's interest, is not possible without mutual trust between parent and teacher. ~Dorothy H. Cohen



Earn Your Badge:

- Learn:** How to create relationships that work.
- Understand:** One another's point of view.
- Demonstrate:** How to respond to teachers.
- Find:** Additional resources about teacher/family partnerships.

Meet your Expert Guides



Derek



Linee

Derek Govin is the co-founder and coordinator of the SPEDucator project to increase high quality special education teachers for our students in Hawaii. He is a community based instruction SPED teacher at Ewa Makai Middle School and believes in the power of community within the classroom, school and community at large.

As a Mom of children with disabilities and an advocate, **Linee Reeves** is passionate in empowering parents and building partnerships with families, schools, and our community. She is intentional about raising awareness for all abilities and encourages people to look beyond the disability.

"Stay With the Group" (Inclusive Education)



10:20 – 11:20 am

[Click here to Zoom](#)
Passcode: SPIN2021

Workshop Description

This presentation will help families understand the paths to inclusion and why inclusion is beneficial to all students. One size of inclusion does not fit all, but it can fit many, if done right. Join our guides to learn more about the benefits of inclusion and how to talk to your school about inclusive education.

Inclusion is a way of thinking and acting that allows every individual to feel accepted, valued, and safe. An inclusive community consciously evolves to meet the changing needs of its members. Through recognition and support, an inclusive community provides meaningful involvement and equal access to the benefits of citizenship. ~ US DOE



Earn Your Badge:

- Learn:** How inclusion benefits all students.
- Understand:** What IDEA says about inclusion.
- Demonstrate:** How to work with your school to include inclusive practices for your child.
- Find:** Additional resources about inclusion.

Meet your Expert Guides



Amanda



Frances

Amanda Kaahanui is a mom to a senior with a disability who benefits from inclusion at school. She works at SPIN as a program specialist and loves helping families.

Dr. Frances Stetson is the President & Founder of Stetson Associates and her company has been training schools in Hawaii, and around the world to be more inclusive in their practices. She is also the Executive Director for the Inclusive Schools Network.

"It's a Jungle Out There" (Employment Skills)

10:20 – 11:20 am

[Click here to Zoom](#)

Passcode: SPIN2021

Workshop Description

This presentation will help families understand the road to employment is not one-way street. It is an expedition of skill building, following interests and connecting to programs and people.

Employment can look different for each individual and finding the right fit can take time, effort and patience, with the journey as important as the destination.



Earn Your Badge:

Learn: About alternatives to traditional work.

Understand: The importance of contributing to one's community and how to nurture your child's job preferences & aspirations.

Demonstrate: How to develop "soft skills" your child will need for adulthood & employment.

Find: Resources to support your child.

**HOWEVER DIFFICULT
LIFE MAY SEEM, THERE IS
ALWAYS SOMETHING
YOU CAN DO AND
SUCCEED AT.
~ STEPHEN HAWKING**

Meet your Expert Guides



Rhonda



Jared

Rhonda S. Black, Ed.D. is a Professor of Special Education at UH where she teaches and conducts research in strategies for adolescents with disabilities, cultural considerations in transition, and media representation of disability. Working on improving employment outcomes, community integration, and healthy interpersonal relationships for youth and adults with disabilities is her passion.

Jared Galeai is the Community Work Incentives Coordinator at the Center on Disability Studies at UH Manoa. He worked with high school and college students in California as a vocational rehabilitation counselor. His interests are working with individuals with disabilities to achieve work goals and live independently.

"From Surviving to Thriving" (Early Intervention)

11:25 – 12:25 am

[Click here to Zoom](#)

Passcode: SPIN2021

Workshop Description

Families of young keiki will learn about a team approach--PSP-- that promotes positive outcomes for both children and families. Parents are coached by a primary service provider (PSP) who has access to the knowledge and resources of the whole team.



Earn Your Badge:

- Learn:** How to partner with your ISP team.
- Understand:** The PSP process.
- Demonstrate:** Some keiki coaching tips.
- Find:** Resources to support your child.

It's not "just play". Play is an essential part of early learning. It is the lifeblood of the learning process. They are developing their curiosity, problem solving, intentionality, flexibility, and verbal and non-verbal skills. They are developing their emotional intelligence - learning confidence, cooperation, negotiation, sharing, empathy and how to communicate properly. Physically, their fine motor and gross motor skills are being practised and developed. It's not "just play" they are skills for life. ~ MCH Early Childhood Solutions



Meet your Expert Guide



Sheri Umakoshi is an early intervention specialist who provides training and support to early intervention providers statewide. She educates community partners on early intervention services and works with other early childhood programs and agencies to promote services for children with special needs (birth to age 3) and their families.

"S'more Emotional Learning" (Social Emotional Learning)

11:25 – 12:25 am

[Click here to Zoom](#)

Passcode: SPIN2021



Workshop Description

Grab some chocolate and join us around the campfire as we unearth the impacts Covid-19 has had on our students and how the Department of Education is using evidence-based tools to support each student's self-awareness, social awareness, responsible decision-making, self-management and relationship skills.

Earn Your Badge:

Learn: The basic components of SEL.

Understand: What schools are doing to address some of the negative aspects of Covid-19 using SEL curriculum.

Demonstrate: Ways to support to your child.

Find: Resource to support your child.



Meet your Expert Guides



Fern Yoshida is a HIDOE Education Specialist in the Office of Student Support Services. She is the lead on SEL curriculum and development in our Hawaii public schools.

Susan Wood wears a lot of hats. She is a mom to a young adult with a disability, the PCNC at Honokaa High on the big island, works for Hilopaa and is a faculty member for LEND, the Leadership Education in Neurodevelopmental Disabilities program.

"Field Guide to a Great IEP" (IEP Preparation)

11:25 – 12:25 am

[Click here to Zoom](#)

Passcode: SPIN2021



Workshop Description

This presentation will help families understand how to prepare for the Individualized Education Plan (IEP) team meeting to set annual goals and commit resources based on their children's unique strengths and needs.

Earn Your Badge:

- Learn:** About the parts of the IEP.
- Understand:** How to organize your documents.
- Demonstrate:** Knowledge of the IEP process.
- Find:** Resources to support your child.

An infographic titled "7 ways parents can get ready for the IEP meeting" with a notebook icon. It lists seven steps: 1. Organize your records and your thoughts. 2. Get copies of items not in your files, such as missing evaluations or more information on the law. 3. Make your list of concerns, questions, and recommendations that you want considered in the development of the IEP. Put them in order of importance. 4. Talk to your personal advocate about what the meeting will be like and plan what his or her role will be. 5. Write statements you want to make to the IEP team. 6. Write self-statements you will make to yourself for personal support. 7. Rehearse your role in the IEP process, including management of any difficulties that you think could arise, and rehearse again. The infographic is attributed to BROOKES PUBLISHING CO. and cites "From You, Your Child, and 'Special' Education, Revised Edition by Barbara Coyne Cutler with Sue Pratt".

- 1 Organize your records and your thoughts.
- 2 Get copies of items not in your files, such as missing evaluations or more information on the law.
- 3 Make your list of concerns, questions, and recommendations that you want considered in the development of the IEP. Put them in order of importance.
- 4 Talk to your personal advocate about what the meeting will be like and plan what his or her role will be.
- 5 Write statements you want to make to the IEP team.
- 6 Write self-statements you will make to yourself for personal support.
- 7 Rehearse your role in the IEP process, including management of any difficulties that you think could arise, and rehearse again.

Meet your Expert Guide



Rosie Rowe is the Executive Director of Leadership in Disabilities & Achievement of Hawaii and the LDA Hawaii & Pacific Island Parent Training & Information (PTI) Center. Rosie has been leading parents and professionals for over 30 years to speak out and advocate for their children at risk, or with disabilities to improve equal access to their education.

"Exploring ESY" (Extended School Year)

Pre-recorded

[Click here to watch](#)



Workshop Description

This pre-recorded workshop reviews the new Hawaii Extended School Year guidelines. It will discuss what ESY is and isn't, along with the 6 factors that should be discussed with your IEP team every year, to determine if ESY is right for your child.

Earn Your Badge:

Learn: The criteria for ESY.

Understand: If your child qualifies for ESY.

Demonstrate: How your child will benefit.

Find: ESY resources to support your child.

ESY is:

- Special Education and Related Services
- For students 3-21 years old
- Extends beyond the normal school year
- At no cost to parents

Meet your Expert Guides
in the Networking Room!



Roxanne



Cheryl

Roxanne Rokero is the Administrator for the Special Education Section in the Exceptional Support Branch of the Hawaii Department of Education.

Cheryl Yamamoto is a State Office Teacher in the office of Student Support Services in the Exceptional Support Branch of the Hawaii Department of Education.

Benefits Planning



Pre-recorded

[Click here to watch](#)

Workshop Description

Walk, run or hop on the path to understanding government benefits available to children and young adults with disabilities and how to protect them through financial planning. Our expert guides will discuss different aspects of benefits planning so your child can journey on without bumps in the road.

Earn Your Badge:

- Learn:** Why you should have a benefits plan.
- Understand:** How government benefits work.
- Demonstrate:** How to set up a benefits plan.
- Find:** Resources to support your child.

Why Benefits Planning is Important

- It ensures proper coordination of your financial and legal strategy to benefit you, your child and other family members.
- It is critical to integrate your assets with government benefits to maximize your child's quality of life.
- If and when you are no longer able to be the primary caregiver for your son or daughter, you will know that you established a plan to care for them.



Meet your Expert Guides



Ronald



Ann

Ronald Deese is an Academic Support Specialist at UH Manoa Center on Disability Studies and works for the Hire Abilities program.

Ann Moriyasu is an Educational Specialist at UH Manoa Center on Disability Studies.

Networking Rooms

12:30 pm – 1:30 pm

After the workshops, join in the conversation by navigating to one of our live Networking Rooms! Each room will be moderated with guest speakers to answer your questions or share tips and nuggets of inspiration. Watch the pre-recorded workshops on Benefits Planning and Extended School Year and come ready to ask your questions of our expert guides.



Autism Families

[Click here to Zoom](#) Passcode: SPIN2021

Representatives from the Autism Society of Hawaii (ASH), Ho'omana Parent Support and The Autism Community in Action (TACA) will be on hand to answer questions, share resources and talk story about issues that are important to you.

Michelle and Renee Manfredi, our speakers from the Autism Motivation workshop, will be also be available to chat or answer questions.



Benefits Planning/Social Security

[Click here to Zoom](#) Passcode: SPIN2021

Walk, run or hop into this networking room to learn more about benefits planning and social security for your growing child. Representatives from UH's Center on Disability Studies and our local Social Security office will be on hand to guide you through the twists and turns of benefits planning for our children. Be sure to watch the pre-recorded workshop on Benefits Planning and come to this room prepared.



Extended School Year

[Click here to Zoom](#) Passcode: SPIN2021

The Hawaii Department of Education has updated their Extended School Year policy document and wants to share it with you. Join Roxanne Rokero & Cheryl Yamamoto from the HIDOE Exceptional Support Branch to hear what's new, what has stayed the same and how you can work with your IEP team to see if ESY is right for your child. Be sure to watch the pre-recorded workshop on Extended School Year and come prepared to talk story.



Evaluations

Please help us provide feedback to our speakers and improve the SPIN Conference by filling out a short evaluation for each workshop you attend, and an overall conference evaluation at the end of the day.

Everyone who fills out an overall conference evaluation by October 31, 2021 will be entered into our "Happy Camper" prize drawing on Nov. 1st.

Session 1:

Autism Motivation Evaluation: <https://forms.gle/uDKwXQZGN4f6qXJVA>

Developmental Delay & IEP: <https://forms.gle/bPjwDvoKYrCfFHsR7>

ADHD & Executive Functions: <https://forms.gle/qQFBZhg6jNpNYyDU6>

Session 2:

Teacher/Family Partnerships: <https://forms.gle/djVk5NF7KidjTCim8>

Educational Inclusion: <https://forms.gle/XgUcqKUxYBnzPppd6>

Out of the Box Employment: <https://forms.gle/DRwCdKMYTtuUQaFW8>

Session 3:

Early Intervention: <https://forms.gle/WFPbjpSGHU3MGxFA9>

Social Emotional Learning: <https://forms.gle/wWmr954dTWmVXJdi9>

IEP Preparation: <https://forms.gle/f9vsbbJ3gXfsxZyb7>

Overall Conference Evaluation:

<https://forms.gle/SGSsaTpNjJwMiSEp9>

The "Happy Camper" Prize Pack includes:

- 8" Kindle Fire Tablet
- Happy Camper T-shirt
- \$25 Gift card

What Does SPIN Do?

SPIN is a partnership between the Department of Education and the Department of Health's Disability and Communication Access Board.

Special Parent Information Network

Providing information, support and referral to families of children with disabilities to help them be partners in their child's education.



SPIN



**SPIN's
Journey
Through the
Wilderness**
10/23/21

The annual **SPIN Conference** brings families together with dynamic speakers and resources for a day of fun, networking and learning.
www.spinconference.org



Email and Snail Mail to share information, ask a question, or for conference registration.
spin@doh.hawaii.gov
1010 Richards St., Room 118
Honolulu, HI 96814.



The **SPIN Website** has a calendar of local events, local and national resources, a **Parent's Guide to Partnership in Special Education** and more! www.spinhawaii.org



SPIN's Warm line offers parents and professional a live person to talk to. For information, referrals or to talk story, call us at 808-586-8126.



E-Newsletters are published and sent to your inbox 5 times a year, with local and national special education news. To sign up, email us at spin@doh.hawaii.gov.



SPIN is on **Facebook!** Follow our page to see local events, connect to other organizations and see the latest news in special education. Find us at **Special Parent Information Network**.



E-blasts allow us to share community events and information that is important to parents of kids with disabilities. To sign up email spin@doh.hawaii.gov



SEAC

SPIN provides staff and technical support to the **Special Education Advisory Council**, a federally mandated advisory board dedicated to improving special education in Hawaii.
www.seac-hawaii.org.



The spinconference.org website is also a great resource for **archived workshops** on a variety of topics important to families.