



Digital Divide & AI/Useful Apps

Jason Julian



What is Assistive Technology (AT)?

- “Any item, piece of equipment, software program, or product system that is used to increase, maintain, or improve the functional capabilities of persons with disabilities.”
- AT can be low, medium, or high tech
 - [What is AT?](#)

ATRC Services and General Information

- 21st Century Assistive Technology Act
- [Device Lending Library](#)
- [Device Demonstrations](#)
- AT Exchange
- AT Consultations
- Low Interest Financing Program
- Statewide Program with services on every island



Digital Literacy:

Skills Gap: Seniors often have lower digital literacy skills, making it challenging to navigate online platforms and use digital tools effectively

Training and Support: There is often a lack of training programs tailored to seniors, which can hinder their ability to learn and adapt to new technologies

Income divide



Lower-income households: About 43% of adults with household incomes below \$30,000 a year do not have home broadband services



Higher-income households: In contrast, 63% of adults living in households earning \$100,000 or more a year have home broadband services, a smartphone, a desktop or laptop computer, and a tablet

Rural vs. Urban Divide:

- Urban Areas: 72% of counties with a low digital divide are considered urban
- Rural Areas: Only 17.5% of counties with a high digital divide are urban



Health and Mobility:

Physical Limitations: Health issues such as poor eyesight, hearing loss, or limited mobility can make using technology more difficult for seniors

Adapted Devices: Seniors may require devices with larger screens, simplified interfaces, or assistive technologies, which are not always readily available

Responsible AI Use



1. Evaluating AI Output:

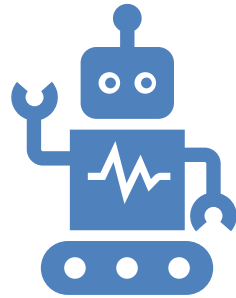


- Always review and critically assess AI-generated content for accuracy and originality.



- Check facts, look for logical errors, and ensure the tone and style are appropriate.

2. AI and Responsibilities:



- Use AI tools safely and responsibly, following school and department rules.



- Avoid using AI for illegal activities, creating inappropriate content, or harming others.

3. Bias & Misinformation:



- Be aware of potential biases or inaccuracies in AI-generated content.



- Verify results using trusted sources before using them in academic work.

Ethical Use of AI

- Assessments:
- - AI tools can be used as tutors or studying assistants but should not be used to complete exams or quizzes unless explicitly stated.

4. Plagiarism:

- Using AI to generate answers or complete assignments without proper citation is considered plagiarism.

- Be transparent about your use of AI and cite any AI-generated content appropriately.

Examples of AI Tools for Students

1. ChatGPT: Writing assistance, generating ideas, answering questions.

2. Grammarly: Grammar and spell checking, writing enhancement.

3. Quillbot: Paraphrasing and summarizing text.

4. Google Gemini: Research and information gathering.

5. Natural Readers: Text-to-speech conversion.

6. Mubert: Generating music from text.

7. Doctrina AI: Accessing notes and quizzes.

8. Tutor AI: Answering academic queries.

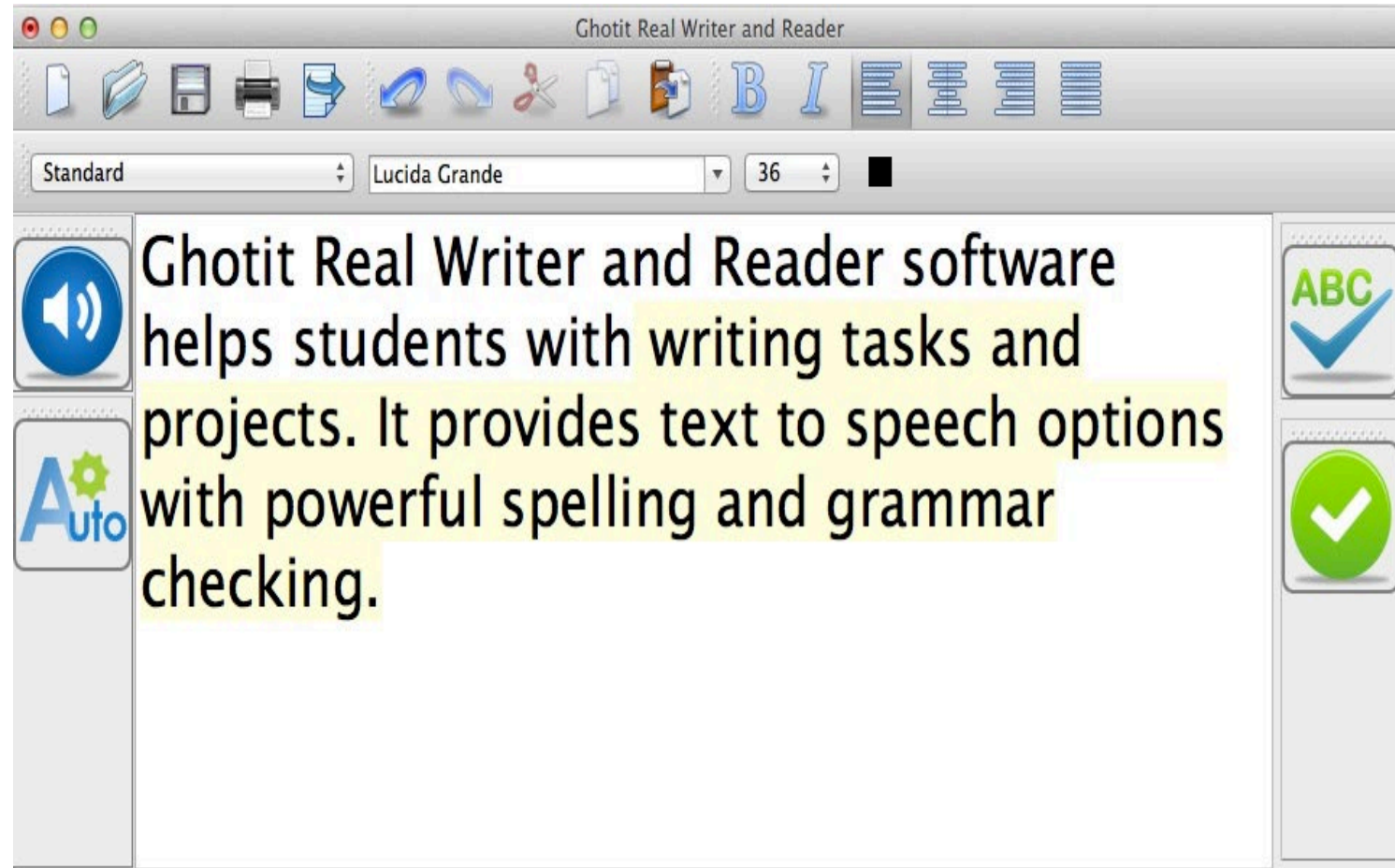
9. Canva: Creating visually appealing presentations and graphics.

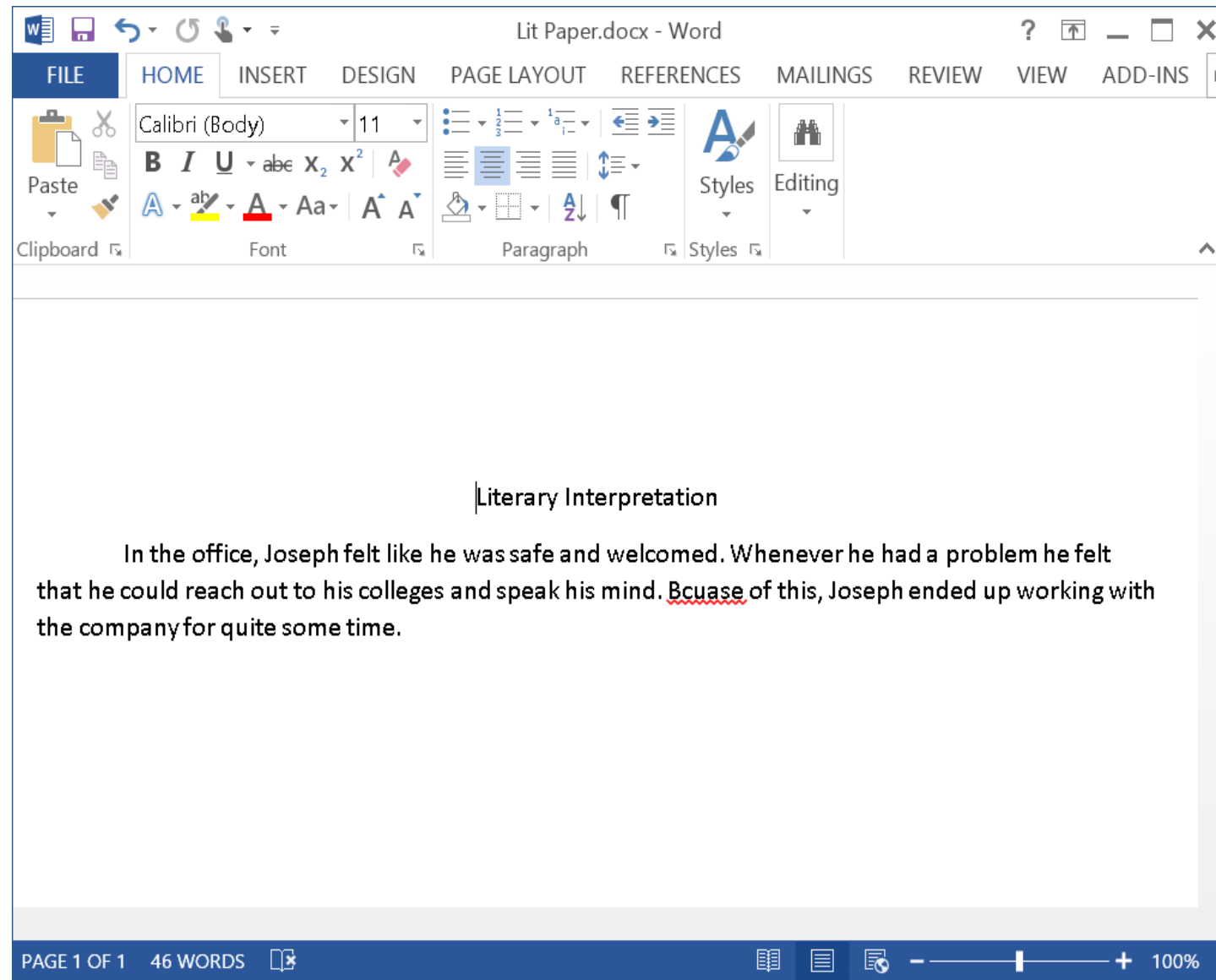
10. Synthesia: Creating AI-generated videos.

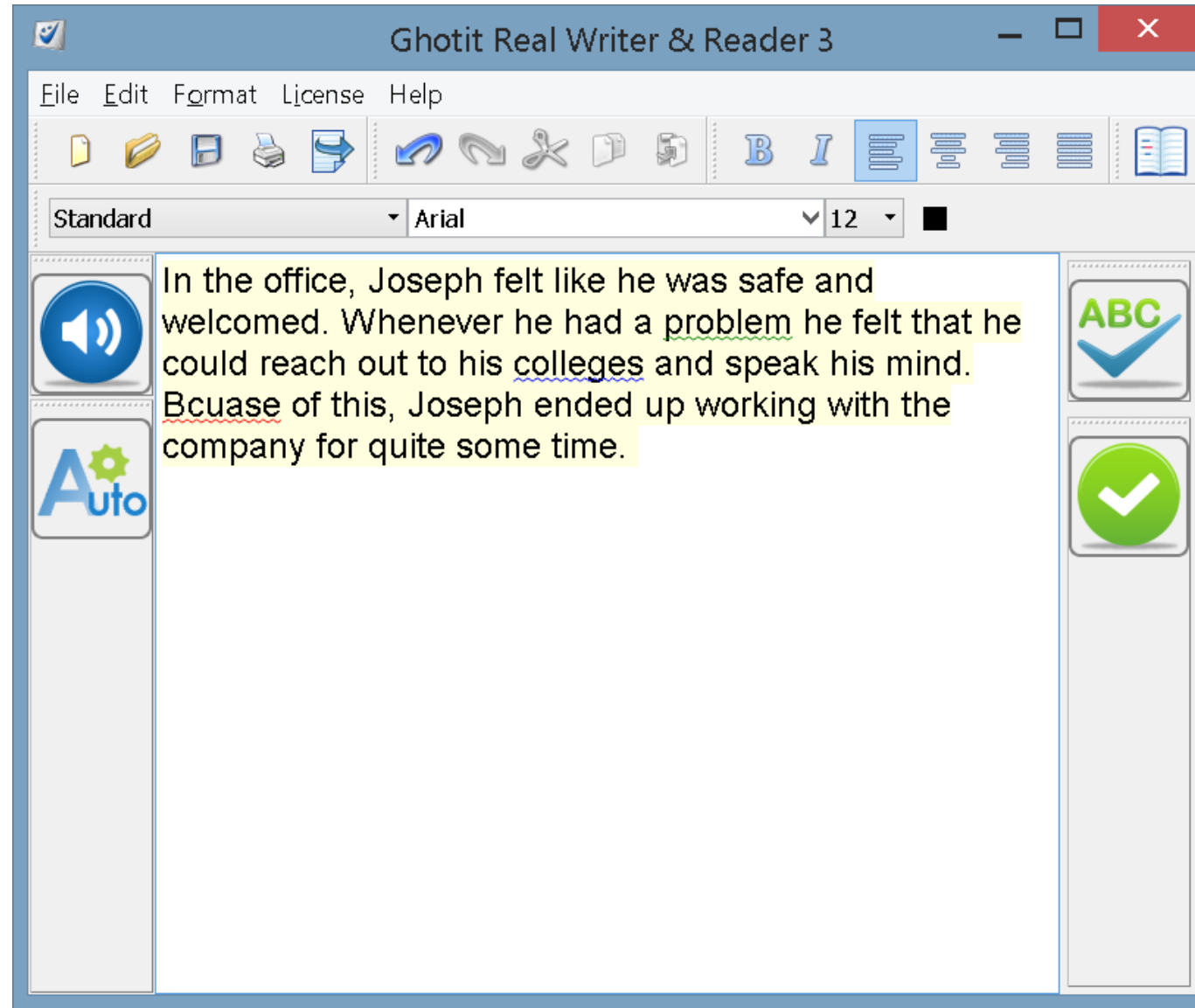
Ghotit

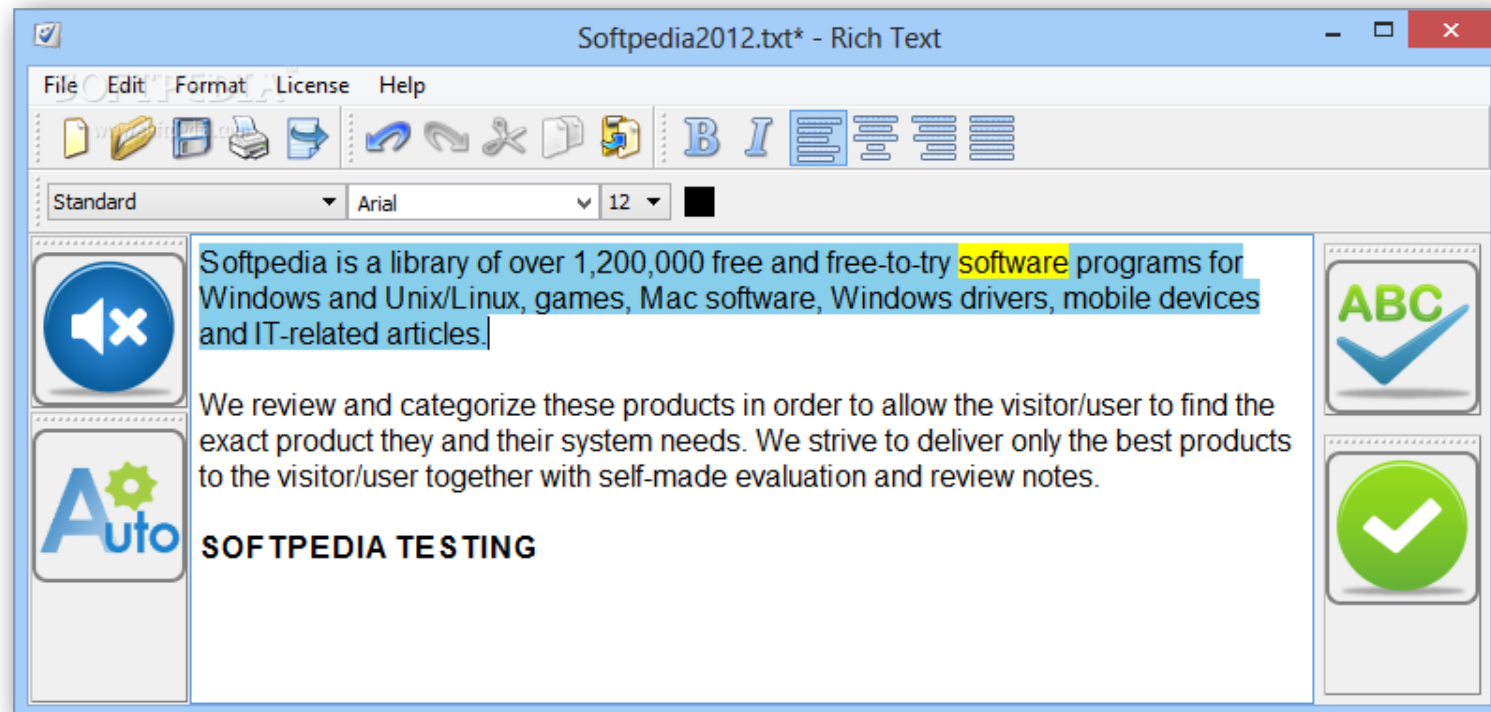


- Context and phonetic spell checker
- Grammar and punctuation checker
- Proofreader
- Reads out any document
- Word prediction by context and phonetics
- Integrated word dictionary









The iPhone/iPad



Tons of Apps!

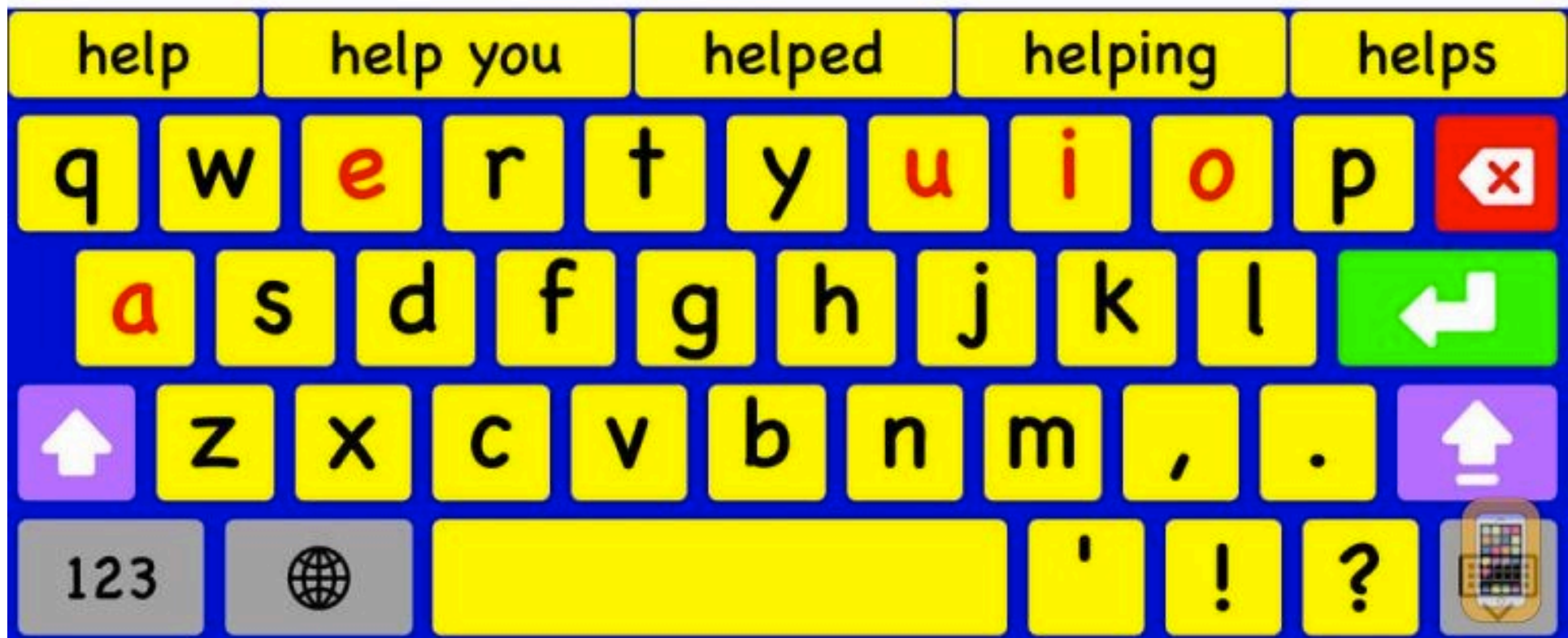


- Learning
- Communication
- Text-to-Speech
- Organization Skills

And many more!

Keedogo Plus

Keyboard for education to use in any app



Open Dyslexic Font

A B C D E F G H I J K L M
N O P Q R S T U V W X Y Z
a b c d e f g h i j k l m
n o p q r s t u v w x y z

Essentially simple



- Focus on learning through a simplified layout
- Support early literacy development with lowercase letters
- Do not get distracted by auto-correction or spell check

Optimize for early learners



- Benefit from lowercase letters and color-coded vowels
- Choose your preferred font, including dyslexic and school-friendly fonts **NEW!**
- Choose ABC or QWERTY layout

Built-in Accessibility Features

- Every computer, phone, and tablet has built in accessibility features that can help a person make the most of their device
- You can find the accessibility menu by looking for the accessibility logo, similar to the circle with the person in the middle seen above
- Adjustable features can include supports for:
 - Vision – magnification, text to speech, display settings, font size, audio description
 - Hearing – live captions, headphone/hearing aid compatibility, sound recognition
 - Speech – text to speech
 - Mobility – voice or switch control, alternative keyboard, dictation, predictive text
 - Cognitive – simplified screens, text to speech, speech to text



ATRC Contact



Jodi Asato

Jodi@atrc.org

808-532-7112



Jason Julian

jason@atrc.org

808-532-7111



www.atrc.org

Sign up for our newsletter

Request more information

**Assistive Technology
Resource Centers of Hawaii**

**200 North Vineyard Blvd.,
Ste 430
Honolulu, HI 96817**

Phone: 808-532-7110