




# Spellbinding **NETWORKS** SPIN WORKSHOP 2025

# Desired Outcomes for This Workshop

Participants will learn/become aware of/practice:

- ★ The benefits of creating **social supports and friendship circles** for students with disabilities--boosting self-esteem, reducing feelings of isolation, improving social skills, etc.
- ★ The importance of **inclusive practices and mentors** in creating a sense of belonging and opportunities for personal growth and positive social connections
- ★ Tips for families on what they can do **at home and in the community** to support their child's social development
- ★ Where to go online or in the community for **more information** about building positive social networks for students with disabilities.



# Benjamin Chu, Ph.D

## SPIN Advisor, Mentor, and Mentee

You can enter a subtitle here if you need it

A decorative border surrounds the slide, featuring a thin gold line. At the corners and midpoints of the border are gold celestial motifs: crescent moons, four-pointed stars, and small circles. The text "Title of slide" is centered in a white serif font.

# Title of slide

# Tina King

## SPIN Advisor and Mom

Special Education Advisory Council, SPIN  
Advisor, Advocate



# Connecting

## Vision/Goals

Where do I begin?

Who are my child's support system?

What happens when hope begins to wane?

- Remember the Who and Why
- What can be done better?
- What's available?
- What can be created?
- What are the needs?
- What does the student need/want?
- What are the students interests?
- Who can make it happen?

# Advocacy

## Build a Team (Village)

- Student
- Team (IEP/Program)
- Community/Programs

## Action Steps

- Communication
- Plan
- Support
- Advocate

***Don't Give Up! Celebrate progress, wins big & small!***

# Encourage

- Self Advocacy
- Opportunities
- Persistence
- Support
- Solutions
- Teamwork
- Appreciate
- Independence



Celebrate!





# Zach King

## Senior, Kapolei HS

Self-Advocate (Individual w/ASD/ADHD),  
Amazing Young Man

**My Journey:**



# Mentors that made Impact

- Mr. Dufford, Freshman year - former World History teacher, Care Coordinator, currently SPED Dept Head at Kapolei High School
  - Created an comfortable, accepting, inclusive class environment. Encouraged and supported growth.
- Mr. Glenn Lagrimas, Language Arts Teacher, TA Class, Care Coordinator
  - Enjoyed LA, encouraged/supported self advocacy, personal growth. Advocated for more inclusive & general education classes.
- Ms. Sumile, Modern History of Hawaii Teacher, confidant,
  - Provided counsel/safe space, encouragement, academic & personal growth.
- Ms. Rachel Amparo, Drama Teacher, TA Class
  - Created a social network of friendships through Drama Classes & Productions. A culture of creativity, acceptance, opportunity, a safe space of encouragement & inclusivity.
- Ms. Tanna Mohammed, Science Teacher, Care Coordinator
  - Supported personal and academic, social emotional, and personal support & growth. Supporter of inclusive environments.
  -
- Mr. Gary Chun, Ready to Work Founder
  - Provided a class & work opportunity paid internship, encouragement, and network.

DVR - Lanakila Pacific  
(Paid Internship)

# Opportunities

Ready to Work Program

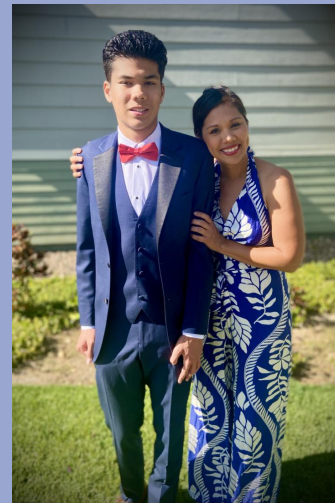




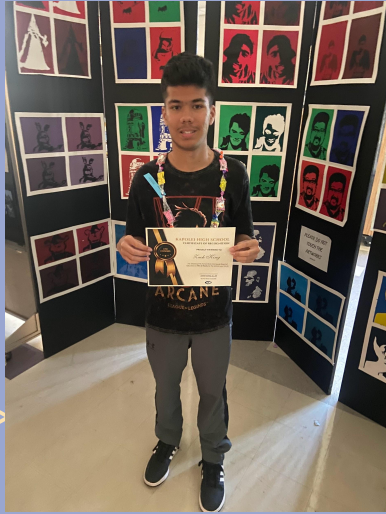
# Memorable Moments



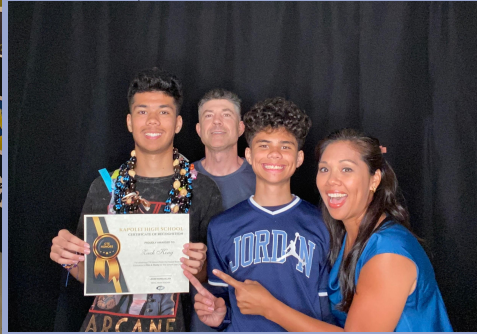
*There were many people that have made impact but it was those that without direction or thought moved by their heart and who they were - created a world of acceptance and connection. Thank you.*



# Achievement



Career & Technology  
Education Honors (Film &  
Media)



Graduation!  
Class of 2025

Honor Roll



Kapolei High School  
Hurricane of the Month



# Shelby Hastings

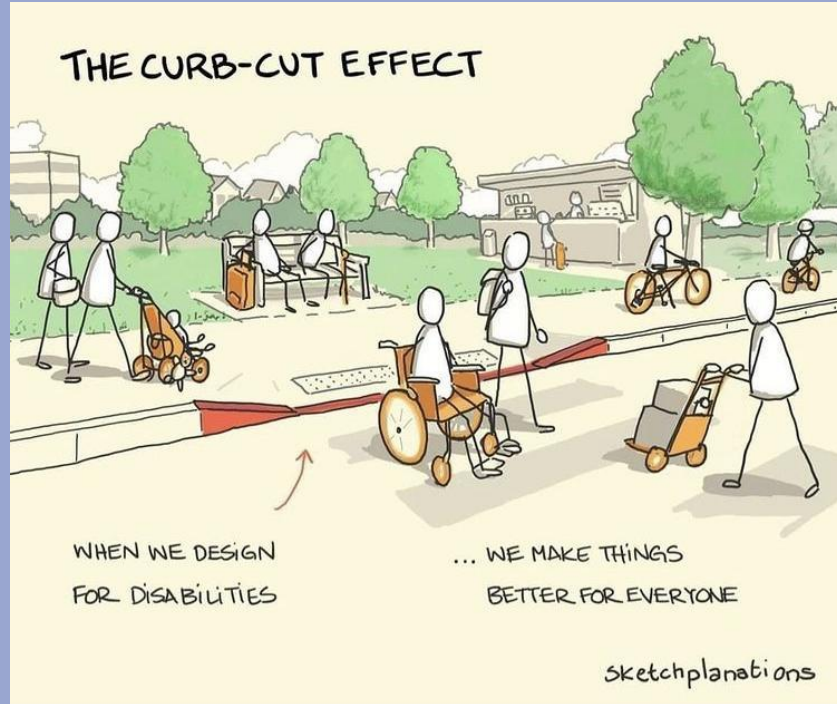
## Inclusive Practices Educator







# Curb Cut Effect

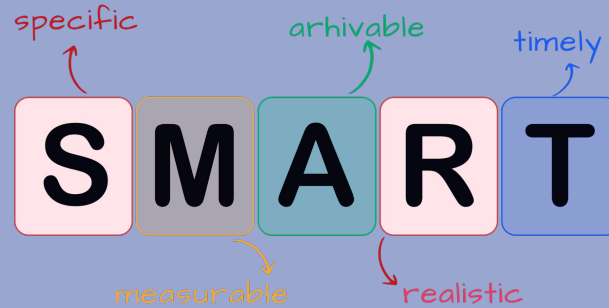


The curb cut effect refers to accommodations designed for people with disabilities that ultimately benefit a broader range of individuals.

This phenomenon is named after curb cuts, ramps at sidewalks designed for wheelchair users, which also proved useful for people pushing strollers, luggage carts, and others.



# Structured Goals for IEP



- ★ Initiating Interactions
- ★ Maintaining Conversations
- ★ Understanding Social Cues
- ★ Participating in Group Activities
- ★ Developing Empathy and Perspective-Taking
- ★ Conflict Resolution
- ★ Maintaining Friendships

# Accommodations and Supports

Social Skills Instruction:

Peer Support and Mentoring:

Structured Social Opportunities:

Visual Supports:

Environmental Modifications:

Adult Support and Facilitation:

Communication Supports:

Collaboration with Related Service Providers:

# STUDY OBJECTIVES



## CENTAUR

Despite being red, Mars is actually a cold place



## NYMPH

Venus is the second planet from the Sun



## GHOST

Mercury is the smallest planet of them all



## CERBERUS

Jupiter is the biggest planet of them all



## GRIFFIN

Saturn is composed of hydrogen and helium



## CYCLOPS

Neptune is the farthest planet from the Sun

# LITERATURE REVIEW

- AUTHOR (YEAR). Title of the publication. Publisher
  - Mercury is the closest planet to the Sun and the smallest one in the Solar System
- AUTHOR (YEAR). Title of the publication. Publisher
  - Mars is full of iron oxide dust, which gives the planet its reddish cast
- AUTHOR (YEAR). Title of the publication. Publisher
  - Jupiter is a gas giant and the biggest planet in the Solar System
- AUTHOR (YEAR). Title of the publication. Publisher
  - Venus has a beautiful name and is the second planet from the Sun





# AWESOME WORDS



# BIBLIOGRAPHICAL REFERENCES

Do you know what helps you make your point clear? Lists like this one:

- They're simple
- You can organize your ideas clearly
- You'll never forget to buy milk!

And the most important thing: the audience won't miss the point of your presentation at all. Let's use lists!

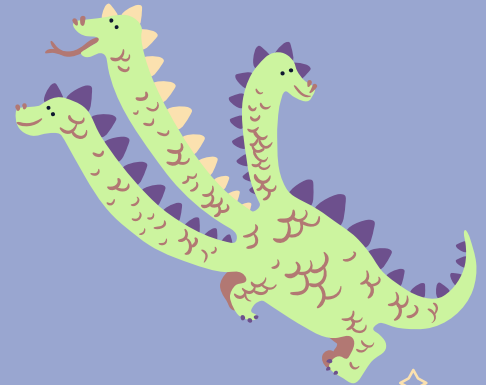


# Mahalo nui loa

Do you have any questions?

Stick around for a Q and A/ Talk  
Story

CREDITS: This presentation template was created  
by **Slidesgo** , including icons by **Flaticon** and  
infographics & images by **Freepik**



# ICON PACK

