

ARTIFICIAL INTELLIGENCE IN SCHOOLS



What is AI

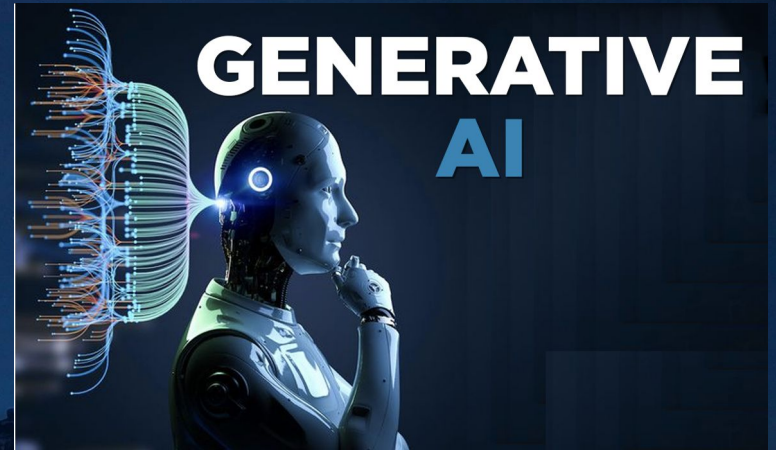
- **Three Types of AI to Know:**

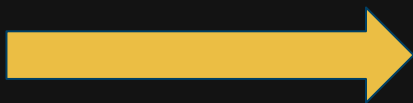
- **Reactive:** Responds to immediate input (like a basic spam filter or a chess game).
- **Predictive:** Uses patterns to guess what's next (like Netflix recommendations or predictive text on a phone).
- **Generative:** Creates new content—text, images, or audio—from scratch (like ChatGPT or Gemini).



WHAT IS GENERATIVE AI?

A type of artificial intelligence (AI) that can create new content based on patterns it learns from existing data.





no thank you but thanks away, however one last question? is there anything on your mind that you are thinking?

"Thinking" for an AI is a bit like a very fast game of word-association. I don't have a "shower thought" or a "daydream," but I do have **patterns** and **curiosities** based on what we've been talking about.

Since you mentioned designing a laser device, here is what's currently "on my mind" (or at least, the top of my processing queue):

- **The "Pencil-to-Physics" Gap:** I'm fascinated by how someone can take an Apple Pencil, sketch a cool idea in Shapr3D, and then use something like NVIDIA Isaac Sim to see if that idea would actually survive in the real world. That bridge between a drawing and a functional machine is where the magic happens.

What is AI

- **Integrated vs. Standalone:**
 - **Integrated AI:** Works inside tools you already use (Docs, Canva, MathX)
 - **Standalone AI:** Chatbots also known as LLMs (Large Language Models) like ChatGPT.



AI in HIDEOE

Tools and Guidelines

"It's the wild west, everyone just do what they feel like" (DOE teacher)

But is it really?



The Educator's Guide:

HIDOE provides structured guides for teachers to integrate AI safely.

- The "Human-in-the-Loop" Priority:
 - Teachers remain the primary decision-makers for your child's learning.
- Refined Focus Areas:
 - Ethical Ai Use
 - Literacy Support:
 - Critical Thinking:

AI in Hawai'i's Public Schools

Tools and Resources from the Digital Design Team (DDT)

- **The Featured Tools:**
 - **Google Gemini:** A creative partner for brainstorming and drafting.
 - i. As LLM
 - ii. In Google Classroom
 - **NotebookLLM:** A research assistant that "learns" from specific documents you provide.

[hands-on exercises for AI literacy and critical thinking.](#)



Practical Action Steps for Parents

Questions for IPE Meeting

- **Personalization:** "How are Gemini or Notebook LLM being used to differentiate instruction for my child's specific learning style?"
 - a. Are you Re-leveling texts for them?
- **Data Privacy:** "What steps are being taken to ensure my child's data is protected"
- **Skill Building:** "Is the AI helping my child bridge a gap (like writing)"





*To Be Continued...
AI Beyond The Classroom*

Social Coaching for Developmental Disabilities

Digital Training for Real-World Connection

- **NOORA AI (Stanford):** A social coach that provides a safe, judgment-free space to practice empathy and conversation.
- **Arrows Empathy Trainer:** Uses interactive video to help users navigate social cues and emotional responses.
- **How it works:**
 - Practice social interactions "on-demand" without the fear of rejection.
 - Bridges the gap between digital practice and real-world relationships



Social Coaching Risks



The "Echo Chamber" Risk: AI doesn't have its own values and rarely disagrees, which can push people to harmful actions

The Essential Balance: These tools are "training wheels" If they are not used with real human connection they can increase isolation.

"AI can exacerbate a user's isolation if the technology is used without the guidance of trained therapists."

— Catherine Lord, Clinical Psychologist

"You end up in this circuit where an algorithm... is telling you that you're right and maybe pushing you towards bad choices."

— Valentina Pitardi, University of Surrey





*To Be Concluded...
So is it really the 'wild west'?*



Thank you!

moshekar@hawaii.edu



WHAT IS AI

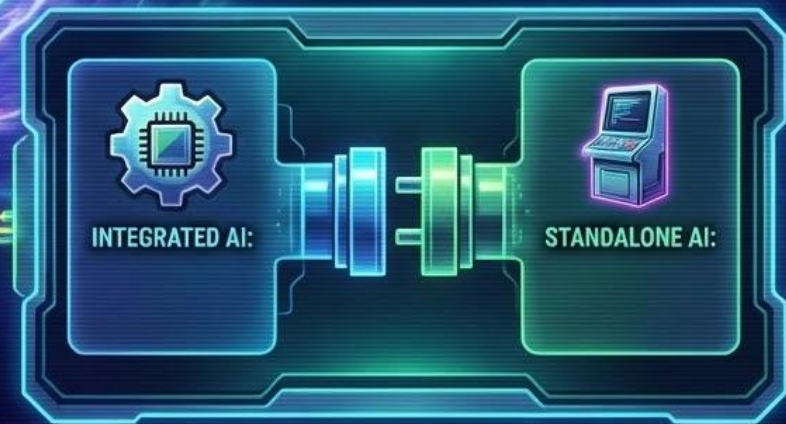


• THREE TYPES OF AI TO KNOW:

- **REACTIVE:** Responds to immediate input (like a basic spam filter or a chess game).
- **PREDICTIVE:** Uses patterns to guess what's next (like Netflix recommendations or predictive text on a phone).
- **GENERATIVE:** Creates new content—text, images, or audio—from scratch (like ChatGPT or Gemini).

• INTEGRATED VS. STANDALONE:

- **INTEGRATED AI:** Features "hidden" inside tools you already use, like spellcheck in Google Docs or accessibility read-alouds.
- **STANDALONE AI:** Dedicated platforms built specifically for AI interaction, such as LLMs (Large Language Models) like ChatGPT.



AI in Our Daily Lives: Flow, Forms, and Functions - A Schematic Overview

Our daily lives are increasingly intertwined with AI, a rapidly evolving technology that allows machines to learn, adapt, and perform human-like tasks with speed and accuracy.

