

# “Tech Me Up Before You Go Go” Assistive Technology in the IEP

**Jason Julian**

*Assistive Technology Resource Centers of Hawaii  
Assistive Technology Specialist*

**Dr. Tierney Barcarse**

*Hilo-Wāiakea Complex  
Special Education District Educational Specialist*



# What is Assistive Technology (AT)?

---

- “Any item, piece of equipment, software program, or product system that is used to increase, maintain, or improve the functional capabilities of persons with disabilities.”
- AT can be low, medium, or high tech
  - [What is AT?](#)

# AT for Low Vision

Portable/Desktop Video Magnifiers



# Reading AT for Low Vision or Dyslexia

---

- Rayban Meta glasses
- Orcam read 3
- C-pen



# AT for Hard of Hearing



- Hearing Amplifiers
- FM systems
- Bed shaker Alarm clocks



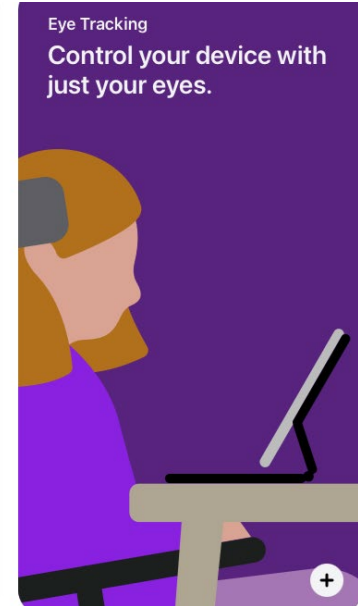
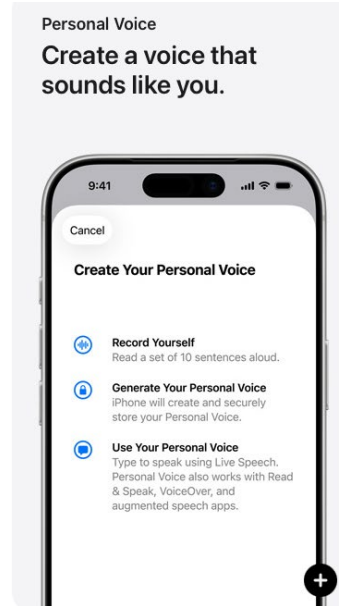
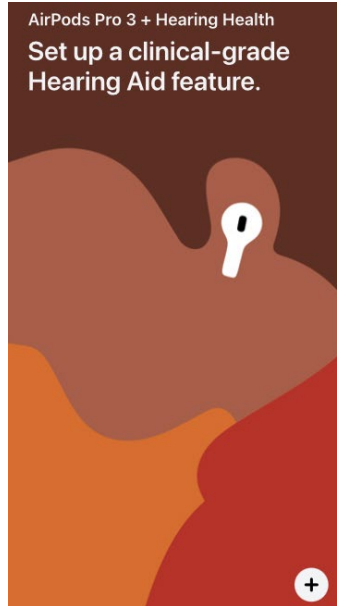


# Built -in Accessibility

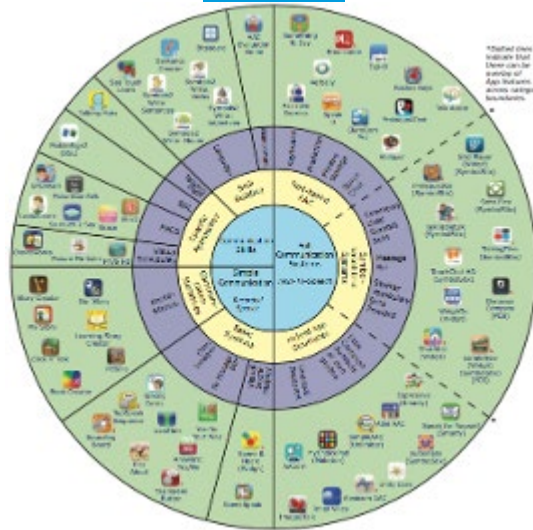
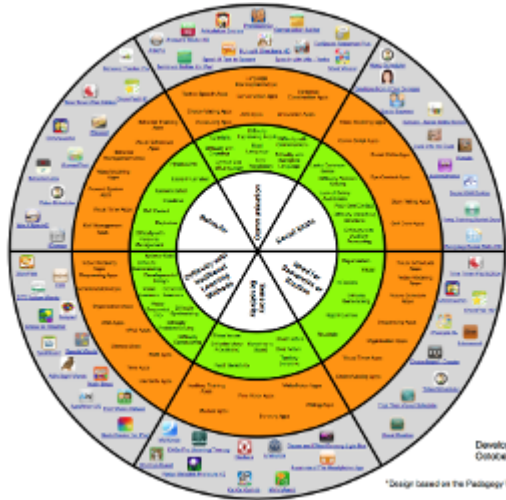
Computers

tablets

Smartphones



# Learning Software





## 2. Obligation of the Department

---

20 minutes

- During an IEP Meeting
- AT functional Assessment- importance of trialing
- Use in the home and school



# Is AT Needed?

- Can the student access learning and participate in their education program?



# Consideration of Assistive Technology

## Requirement:

Each time an IEP Team develops, reviews, or revises a child's IEP, the IEP Team must consider whether the child requires assistive technology devices and assistive technology services.

### AT Devices

- Augmentative and Alternative Communication (AAC)
- Reading and Literacy Aids
- Writing Aids
- Math Aids
- Cognitive Aids

### AT Services

- Training the student
- Training the Family

### AT trial results and recommendations

- Trials can take a few weeks, be patient

# Provision of Services

---

- If the data demonstrates that the student needs an AT device(s) and AT services then it is documented in the IEP and PWN.
- The department provides the needed AT device(s) and AT service at no cost to the parents. If appropriate, the AT can be provided in the home.



# Assistive Technology Functional Evaluation

---

An **ongoing process of considering** assistive technology interventions, which is conducted in the **child's customary learning environment** by a team of people knowledgeable about the child, and is relevant to the provision of a free appropriate public education (FAPE). An assistive technology **functional evaluation may include** the following:

1. Trial period of the assistive technology intervention
2. Documentation of the effectiveness of the AT intervention
3. Determination of the necessity of an AT intervention.



## IEP: *Consider* whether the child requires AT

(34 C.F.R. Section 300.324 (a)(2)(v); §8-6048 (2)(E))

---

Consideration does not imply a **mandate** for the actual provision of an assistive technology device and/or service; however, **teams must address the student's performance in relation to the curriculum and specially designed goals and objectives** .

*If a student is functioning at expected performance levels without AT interventions, the conclusion that **AT is not needed at this time can be easily made.***

# Thanks!

Does anyone have any questions?

Dr. Tierny Barcarse  
Special Education District Educational Specialist  
Ph:(808) 313-6600

---

Jason Julian – AT Specialist  
Assistive Technology Resource Centers of Hawaii

Ph: 808-532-7111  
Email: [jason@atrc.org](mailto:jason@atrc.org)